



# Public Health Services



Tata Steel UISL is India's first private sector comprehensive urban infrastructure service provider. It was established as Jamshedpur Utilities & Services Company Limited (JUSCO) in 2003-04 by de-merging Tata Steel's town and power service divisions. Based on restructuring / simplification of Tata Steel Group Companies, JUSCO was named as Tata Steel UISL in Dec19.

There is a legacy of over 100 years in providing integrated city management service in Jamshedpur – the services demonstrate the commitment to Jamshedpur – benchmark levels of T&D losses in power, benchmark levels of NRW losses in water and now continuously improving in all India Swachh Bharat Survekshan rankings.

The nature of services offered by the company are mainly Operations & Maintenance (O&M) and EPC. The company is proud of its capability in power distribution, water projects and O&M, solid waste management and public health services, horticulture services, road building. This is founded on reliability and voice of customer systems / performance measurement.

Public Health Services	
Key Processes	Process requirement
<ul style="list-style-type: none"> <li>▪ Environmental sanitation,</li> <li>▪ Mosquito control,</li> <li>▪ Anti-larval treatment,</li> <li>▪ Anti-adult treatment,</li> <li>▪ Veterinary services</li> </ul>	<ul style="list-style-type: none"> <li>▪ Ensure safe and environment friendly collection &amp; disposal of SWM at optimum cost as per regulatory requirement;</li> <li>▪ Control outbreak of mosquito borne diseases;</li> <li>▪ Dog population management;</li> </ul>

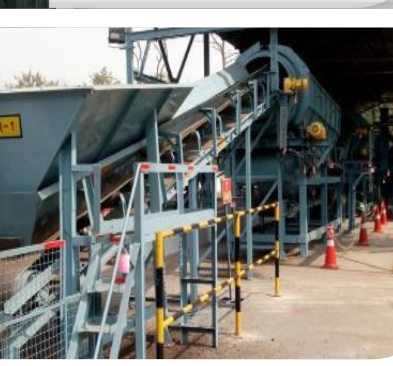
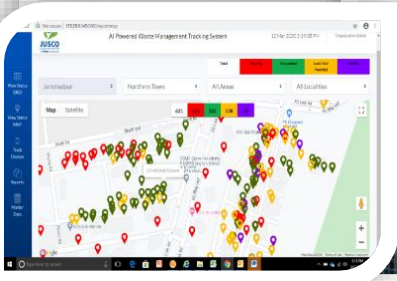
Fact File	
Population (lacs)	~10
Garbage quantity (TPD)	265
Area in (Sq. Km)	64
No. of Households (K)	45
No. of Markets/Commercial areas	13
Length of Road (Km)	797
Length of Drain (Km)	356
No. of vehicles with GPS enable system	77
No. of Secondary fleet vehicles	25
Compost Processing – Out put (TPM)	350
Collection to Generation Ratio	92%
No. of Modular bio-gas plants (30 Kg each)	16
Mechanized Road Sweeping in Class A Roads (145 km)	100%
Secondary Transfer stations (Nos)	05
Dry Waste Collection Centers	05
No of e- vehicles engaged in Primary Collection	32



# Functioning of PHS Department



Conservancy	Fleet Section	Vector Control	Veterinary
<b>Proactive</b>			
Door to Door collection with source segregation	Secondary Collection of Solid waste to transfer	Mosquito control through	Treatment & Immunization of Animals at Veterinary Hospital.
Manual & Mechanized Sweeping,	Compactors – 14 Nos	Anti larval treatment	
Primary collection of Solid waste	RRR: Material Recovery Facilities- 5	House Search	
Drain Cleaning,	Dumper Bucket - 300	River bed Treatment	
Big Drain Cleaning	JCB & Hyva	Biological Control	
Dual Container TATA Ace - 127	Road Sweeping Machine - 2	BCC / IEC	
Management of Public Conveniences ((PLs & ULs)	Disposal of MSW & Management of Landfillte	Scheduled and random Fogging	
<b>Reactive (SLG )</b>			
Customer Complaint Handling	Garbage Removal on Request & Special Occasion in Bagan and Fringe area	Removal of Beehive.	Sterilization of Dogs
Request Handling		Snake & Rat nuisance	
Disposal of Dead Animals		Indoor spray for mosquito, cockroach based on JSK	
Cleaning of VIP bungalows			
Bin Haulage paid service			



# Recycling work done by TATA STEEL UISL in C&D waste management at Jamshedpur.



## C&D waste management



Construction and demolition waste is being disposed by resident/Commercials/  
Constructions sites of Jamshedpur at

- Roadside
- Near by previous garbage community Point (210 locations – Surveyed)
- Fringe areas (~305 locations)
- Big drains - 5 locations at a stretch of 25 Km

–Around 45 MT of mixed C&D waste is generating per day at Jamshedpur.

- Main issue:** Lack of appropriate recycling facility, Indifferent attitude towards waste, Illegal disposal of waste by contractor for saving money.
- Open dumping at CH Area, Baridih, Marine drive, and other parts of Jamshedpur city**
- Impact:** fundamental factors affecting the environment are dust and noise



❑ **Primary Collection & Transportation;** Collection and transportation system proposed on binless system

- **Deployment of vehicles along with crew based on proactive nature.**
  - Industrial construction sites
  - ICS Operating sites (Internal civil repair dept of TSUISL)
  - illegal dumping Points.
- **Providing vehicles along with crew on the On call basis (Zimmedar Nagarik App.Integration)**
  - Collection from Small generators ( e.g. Individual houses, Small building)
  - Collection from bulk generators ( Flats, Residential/gated communities/ colonies, Malls)

❑ **Processing/Recycling plant (Conversion of C&D waste to useful products):** 5 TPD Processing facility ; Mechanical sorting process Comprising of

❖ **Dry Activity:**

- Sorting through bar Screens (Size separation)
- Crushing for breaking down bulky waste.
- Magnetic separation for separating metals

❖ **Wet Activity:**

- Dust suppression and washing for reduction of loose soil and grit.





## C&D waste used by PHS Dept in innovative ways on regular basis

- ❑ Designated staff to identify C&D waste in Jamshedpur, who identifies the point of C&D dumped and responds to customer/ requests immediately.
- ❑ Public Health services shall provide tipper trucks to transport the C&D waste to the processing facility or designated open points of disposal.
- ❑ The collection and transportation of the C&D waste is planned to avoid peak traffic timings and is planned in early morning or late evenings for transportation.
- ❑ Fully covered vehicles in good condition are deployed to avoid dust emission/leakages on to the roads.
- ❑ As per C&D waste bylaws we also charge customer with user charges for collecting the same on trip basis.
- ❑ Use of C&D waste in central and side verge development of roads.
- ❑ C&D waste is used for destroying the perineal breeding points of mosquito.
- ❑ C&D waste has is being used for compaction of waste in waste dump side.

AutoSave On (Annexure- A) C&D Waste geo tagged General • Saved Manoj Singh Shekhawat

File Home Insert Page Layout Formulas Data Review View Automate Help

	A	B	C	D	E	F	G
4	3	NEAR K-13 SUB STATION	UNKNOWN	22.808109	86.16761	1 HYVA	
5	4	PARDIH ALLEY 8 NO. BUNGLOW BACKSIDE KADMA F.A	UNKNOWN	22.809132	86.170374	2 T/A	
6	5	GAURA RD BACKSIDE OF 9 NO. BUNGLOW KADMA F.A	ICS	22.810173	86.171396	3 T/A	
7	6	DINDLI ENCLAVE INSIDE ,SIDE OF FLAT NO. 12	ICS	22.811678	86.172076	5 T/A	
8	7	KADMA F.A, RD NOP. 13, L/4 12 NO BACK SIDE	UNKNOWN	22.811505	86.163263	3 T/A	

Team is deployed to identify the C&D dumped (2400 points with coordinates) in city area every year and the same is collected and disposed.

### Typical Output Composition

Material	Percentage
Soil	37%
Aggregate	37%
Sand	16%
Other materials	10%

Ready General Accessibility: Investigate

Type here to search

ENG IN 5:49 PM 8/19/2023







**Landscaping using C&D waste**







**Side verge : Landscaping using C&D waste to avoid encroachment by hawkers**





# Strengthening & Widening of town Roads



C&D waste is being used in

- Developing landscaping of central verges.
- Developing central verges along with fermented compost.
- Curb stones/Pedestrian pavement made of paver blocks developed from C&D waste processing.





# TATA ROTARY FOREST trail: use of 47000 tons of C&D waste from city and nalla cleaning/desilting of lakes





The TATA ROTARY FOREST trail is conceived as an Urban Waste Land Generation project with introduction of Mini-forest and Wetlands, thus creating an eco-habitat in an area of land used for slag, C&D and municipal waste disposal site.

This area was spread over ~21 acres in land and in 1<sup>st</sup> phase 17 acres were developed in two parts one as land development and other as wetland restoration. For land development, it was shaped as following zones with more than 21000 tree saplings and green cover.

Shrivana

Mahavana

Tapovana

The concept was derived from ancient times forest classification







# धन्यवाद

